

SIGNIFY

WILDLIFE CAMERA



Model Number: EA1427

INSTRUCTION MANUAL



AFTER SALES SUPPORT

  1300 777 137

Welcome

Congratulations on choosing to buy a Signify product.

All products brought to you by Signify are manufactured to the highest standards of performance and safety and, as part of our philosophy of customer service and satisfaction are backed by our comprehensive 1 Year Warranty and customer technical support line.

This comprehensive instruction manual will provide you with a detailed guide on how to operate your product and will also assist you in troubleshooting any problems that you may encounter.

If you have any queries regarding the use of this product, please feel free to phone our technical support line for some friendly advice. If you are experiencing difficulties or believe that the product may have a technical fault, we will assist you in rectifying the issue. We can generally solve most problems simply and quickly over the phone, so please always phone us first!

We are sure that you will enjoy using this product and you can expect to gain years of service from this product when it is used and maintained in the correct manner.

Contents

Welcome	02
Warranty Details	04
General Information and Safety Instructions	05
Product Overview	06
Before First Use	09
Instructions	11
Repair and Refurbished Goods or Parts Notice	14
Other Useful Information	15
Cleaning and Maintenance	15
Storage	15
Responsible Disposal	16
Specification Table	16



SIGNIFY

Wildlife Camera

Warranty Details

REGISTER YOUR PURCHASE AT www.aldi.com.au/em/about-aldi/product-registration/
TO KEEP UP TO DATE WITH IMPORTANT INFORMATION

The product is guaranteed to be free from defects in workmanship and parts for a period of 12 months from the date of purchase. Defects that occur within this warranty period, under normal use and care, will be repaired, replaced or refunded at our discretion. The benefits conferred by this warranty are in addition to all rights and remedies in respect of the product that the consumer has under the Competition and Consumer Act 2010 and similar state and territory laws.

Our goods come with guarantees that cannot be excluded under the Australian Consumer Law. You are entitled to a replacement or refund for a major failure and for compensation for any other reasonably foreseeable loss or damage. You are also entitled to have the goods repaired or replaced if the goods fail to be of acceptable quality and the failure does not amount to a major failure.



General Information and Safety

Instructions

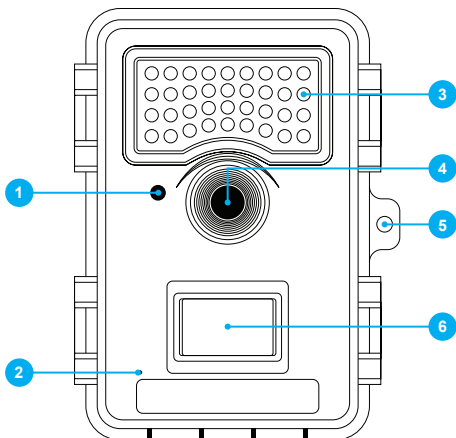
RETAIN FOR FUTURE USE

Read this manual thoroughly before first use, even if you are familiar with this type of product. The safety precautions enclosed herein reduce the risk of fire, electric shock and injury when correctly adhered to. Please keep this user manual in a safe place along with your purchase receipt, warranty card and carton for future reference. If applicable, pass these instructions and packaging on to the next owner of the product. Always follow basic safety precautions and accident prevention measures when using an electrical product.

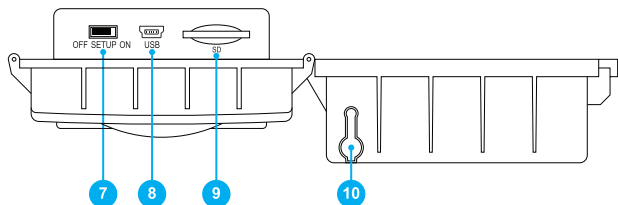
1. Read all instructions before using the Wildlife Camera.
2. The Wildlife Camera is not intended for use by persons with reduced physical, sensory or mental capabilities, or lack of experience and knowledge, unless they have been given supervision or instruction concerning use of the product by a person responsible for their safety.
3. Do not use the Wildlife Camera for anything other than their intended use.
4. Do not pull or carry the Wildlife Camera by the USB cable or Power Cable.
5. Do not use the cables as a handle, close a door on the cables or pull the cables around sharp edges or corners.
6. Do not immerse the Wildlife Camera in water or any other liquids.
7. Repairs to any electrical equipment should only be performed by qualified personnel. Improper repairs may place the user at serious risk and will void the warranty.
8. Do not use the Wildlife Camera if it has been dropped or damaged in any way.
9. This product is not a toy. Keep the Wildlife Camera out of reach of children.
10. This product is not user-serviceable. Contact with high voltage components may cause a risk of electric shock, therefore do not attempt to open the cover of the Wildlife Camera.
11. The manufacturer and retailer are not responsible for any eventual damages caused by improper or faulty use.
12. Do not place the Wildlife Camera near a hot burner (gas or electric), or other heat emitting sources or open flames.

Product Overview

Front of Wildlife Camera



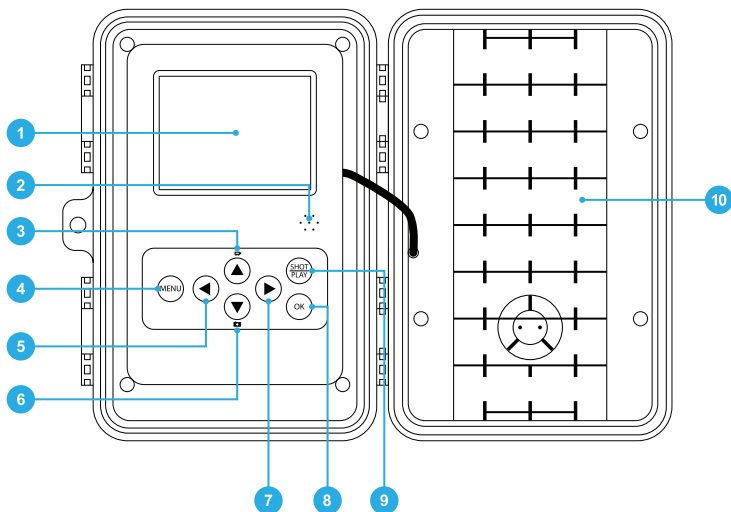
Bottom of Wildlife Camera



- | | |
|------------------|----------------------|
| 1. LED Indicator | 6. PIR Sensor |
| 2. Microphone | 7. Power/Mode Switch |
| 3. LED IR Flash | 8. USB Port |
| 4. Lens | 9. SD Card Slot |
| 5. Lock Hole | 10. 6V DC Input Port |

Product Overview (cont)

Inside of Wildlife Camera



- | | |
|-------------------------|--------------------------------|
| 1. 2.4 inch Colour LCD | 6. Down Button/Photo Mode |
| 2. Speaker | 7. Right Button |
| 3. Up Button/Video Mode | 8. OK Button |
| 4. Menu Button | 9. Shot Play (Playback Button) |
| 5. Left Button | 10. Battery Slot |

Included (not pictured):

Mounting Strap, USB Cable, SD Card

AFTER SALES SUPPORT

 1300 777 137

 service@unclebills.com.au

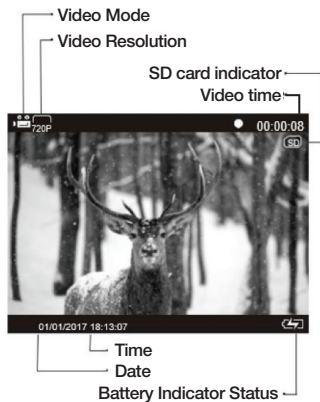
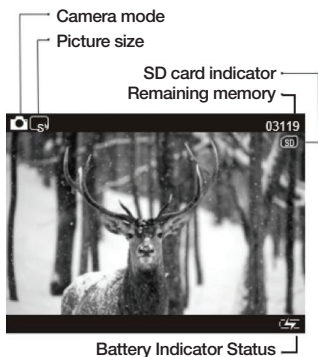
MODEL: EA1427 PRODUCT CODE: 6568 04/2019

07

Product Overview (cont)

Shooting Information Display

There is a 2.4" LCD display screen with seven keys to setup the camera. When the camera is turned on, current setting will be displayed on the screen.



Before First Use

Installing the SD Memory Card

This camera uses SD memory card for data storage, please insert the SD memory card correctly before you start.

NOTE: The SD card is the only data storage device in the camera, be sure to use a good quality SD card.

Powering the Wildlife camera

This camera can utilise 2 different power sources making it versatile for all locations.

Battery Power

Where external power is not available the camera can be powered by either 4 or 8 x AA batteries which are fitted internally.

The unit will come with 8 x AA batteries in the box for your convenience.

8 x AA batteries will provide 12 months standby time, while 4 x Batteries will provide for 8 Months standby time.

Where external power is available the camera can be run from a 6V DC power adapter (sold separately).

CAUTION: Wildlife camera may not be powered using both power sources simultaneously. Remove AA batteries before connecting the 6V DC power supply.

CAUTION: Wildlife camera does not support the charging of batteries.

NOTE: Alkaline LR6 batteries are recommended. We recommend using 4 x AA or 8 x AA batteries in (1.5V for each), camera voltage is 6V.

NOTE: A 6V DC power supply is optional and not included in this pack.

CAUTION: Danger of explosion if battery is incorrectly replaced. Replace only with the same or equivalent type.

Before First Use (cont)

WARNING: Batteries (battery pack or batteries installed) shall not be exposed to excessive heat such as sunshine, fire or the like.

NOTE: When the 6V DC Power supply is not being used, please ensure the DC input cover is always closed.

NOTE: Dispose of used batteries correctly. Please see the "Responsible Disposal" section on page 16 for further information.

Turning on the Camera

Set Test Mode

1. Slide the switch to the **SETUP** position, then the camera will start, display logo, enter Setup Test mode. Press **MENU** to enter parameter settings (If the camera does not operate within 120 seconds, the camera will automatically shut down, at this time, please slide the switch back to the **OFF** position and then dial to the **SETUP** position to restart).
2. Press **Menu** key to enter into menu or exit. The **OK** button is used to confirm the setting, **UP**, **Down**, **Left** and **Right** key can be used to choose function mode and setup camera. **Shot/Play** key is used to take photos or videos manually and also playback photos or videos on LCD.

The main purpose of the **SETUP** mode is to allow you to change the settings of the camera's Parameters, so your camera operates exactly the way you want it to. You will do this by entering the **SETUP** then select **MENU** and pressing the keys below the LCD display which will show you each parameter and its setting.

Menu Menu	Set Parameters	Description
Mode	Photo / Video Photo & video	There are three camera modes: Photo, Video and Pic+Video.
Photo Resolution	3MP / 5MP / 8MP	Choose the image size: 3MP, 5MP or 8MP.
Photo Series	1 Photo / 2 Photos / 3 Photos in series	Choose the continuous shooting number of photos after each triggering.
Video Resolution	1920X1080P / 1280X720P / 640X480P	Choose the video resolution: 1920X1080,1280X720 or 640X480.
Video length	10S / 20S / 30S / 60S	Choose duration of recording video. There are 4 options available: 10S, 20S, 30S and 60S.
Audio recording	ON / OFF	If choose ON, camera will record sound in video mode, otherwise it won't record sound.

Instructions (cont)

Menu Menu	Set Parameters	Description
Delay	5S-60minutes	Selects the length of time that the camera will “wait” until it responds to any additional triggers from the PIR after an animal is first detected and remains within the sensor’s range. During this user set “ignores triggers” interval, the camera will not capture photos/videos. This prevents the card from filling up with too many redundant images. Settings begin with 5s default when parameter is first selected.
Sensitivity motion sensors (PIR Trigger Sensitivity)	High Middle Low	Choose sensitivity of PIR. The higher the sensitivity, the easier the motion sensor would be triggered. It is recommended to use Middle mode. The sensitivity of PIR is strongly related to the temperature. Higher temperature leads to lower sensitivity.
Target recording time	ON/OFF	Set the time the camera will start to record and time the camera will stop recording.
Time lapse	ON/OFF	If set on, camera will automatically take photos or videos at the set interval (Note: in this mode, the PIR sensor is disabled). This is helpful when observing cold-blooded animals like snakes or the growth of a flower. This function can work together with timer.
Language	Deutsch/English Français/Slovenčina Norsk/Dansk Svenska/Русский Español/Italiano	Choose your language of choice. It supports several languages: Deutsch, English, Français, Slovenčina, Norsk, Dansk, Svenska, Русский, Español, Italiano.
Time&data	Set time & date Time format Date format	Enter into Date/Time setting Menu, you can select 24 hours or 12 hours format and press OK to confirm the setting.
Photo stamp	Time & date Date OFF	Select on if you want date, time and moon phase printed on every photo taken by camera, and select off for no imprint.
Temp Unit	Celsius / Fahrenheit	Select either Celsius or Fahrenheit.
Password protection	ON/OFF	Setup a password to protect your camera.

Instructions (cont)

Menu Menu	Set Parameters	Description
Beep sound	ON/OFF	Select ON if you want to hear a beep sound when setting up camera.
Serial No	ON/OFF	If setting a serial number, all photos taken by the camera will show that set of serial number.
Format memory card	ON/OFF	Erase all files or data on SD Card or save all data on SD Card (note: this cannot be undone).
Reset settings	YES/NO	All parameters will be set the same as factory Default setting.
Version	YES/NO	Check software version number will assist for repairs or upgrades.

3. **To take a picture:** press **Down** key first, then press **OK** key.
4. **To record video:** press **Up** key first, and then press the **OK** key.

Automatic Working Mode

After setting and saving the parameters, slide the switch to the **ON** position (LCD display 5-1 countdown to shutdown), the camera enters the automatic sensing mode.

Off Mode

After shooting, please slide the switch to the OFF position, the wildlife camera enters shutdown mode (Please remove the batteries from the wildlife camera when not being used for a long period).

Playback Pictures and Videos

1. **Playback file on the camera:** Switch the wildlife camera to test mode. Press **SHOT/PLAY** key to enter playback mode, photos can be selected through the **UP** or **Down** keys to view, video files must be selected and press **OK** key to play.
2. **View file on PC:** Check that the batteries are inserted correctly into the Wildlife Camera. Next, ensure the camera is shut down, connect the camera to the computer with the USB cable, and then you can view the file directly on the PC.
3. It may take a few minutes to load all files.



Wildlife Camera

Repair and Refurbished Goods or Parts Notice

Unfortunately, from time to time, faulty products are manufactured which need to be returned to the Supplier for repair.

Please be aware that if your product is capable of retaining user-generated data (such as files stored on a computer hard drive, telephone numbers stored on a mobile telephone, songs stored on a portable media player, games saved on a games console or files stored on a USB memory stick) during the process of repair, some or all of your stored data may be lost.

We recommend you save this data elsewhere prior to sending the product for repair.

You should also be aware that rather than repairing goods, we may replace them with refurbished goods of the same type or use refurbished parts in the repair process.

Please be assured though, refurbished parts or replacements are only used where they meet ALDI's stringent quality specifications.

If at any time you feel your repair is being handled unsatisfactorily, you may escalate your complaint. Please telephone us on 1300 777 137 or write to us at:

UNCLE BILL'S AUSTRALIA PTY LTD
48B Egerton Street
Silverwater NSW 1811 Australia

1300 777 137

Opening Hours - 9:00am - 4:30pm (Mon-Fri), 9:00am - 3:00pm (Sat)

service@unclebills.com.au

www.signifyelectronics.com.au

AFTER SALES SUPPORT

14 1300 777 137

service@unclebills.com.au

MODEL: EA1427 PRODUCT CODE: 6568 04/2019



Other Useful Information

Cleaning and Maintenance

- Before cleaning the Wildlife Camera, ensure the Wildlife Camera is switched off and disconnected from any power source.
- The Wildlife Camera is likely only to require regular “dusting” to keep it clean. Use a standard duster, or dry soft microfibre cloth to remove the dust from the Wildlife Camera. Remove dust from the Wildlife Camera regularly.
- If the Wildlife Camera becomes soiled with anything other than dust on its exterior, clean the exterior of the Wildlife Camera by wiping over the surface with a slightly damp cloth and then polish with a soft dry cloth.
- Be careful when wiping over the Wildlife Camera, that you do not apply too much pressure, as there is a risk that you may break parts.
- Do not use detergents or abrasive cleaners, and do not allow moisture, water or other liquid to enter the Wildlife Camera.

Storage

When the Wildlife Camera is not in use, disconnect it from any power source and store in a cool, dry and well ventilated location out of direct sunlight. Ensure that it is not subject to humidity.

Other Useful Information (cont.)

Responsible Disposal

At the end of its working life, do not throw this appliance out with your household rubbish. Electrical and electronic products contain substances that can have a detrimental effect on the environment and human health if disposed of inappropriately. Observe any local regulations regarding the disposal of electrical consumer goods and dispose of it appropriately for recycling. Contact your local authorities for advice on recycling facilities in your area.


Please keep the original packaging carton and materials in a safe place. It will help to prevent any damage if the product needs to be transported in the future. In the event it is to be disposed of, please recycle all packaging material where possible.

If you require another copy of this instruction manual, please contact service@unclebills.com.au to obtain an electronic copy.

The Wildlife Camera has been fully tested and meets all requirements as set out by the below testing standards:

AS/NZS 62471
AS/NZS CISPR 32
AS/NZS 60065

Specification Table

MODEL:	EA1427
ALTERNATIVE INPUT:	6V  2A
BATTERY:	8 x 1.5V (AA/LR6)
DIMENSIONS:	14 x 10.8 x 7.6cm
NET WEIGHT:	305g (WITHOUT BATTERY)
WATERPROOF GRADE:	IP66
VERSION NO:	1.9
ISSUE DATE:	26TH NOVEMBER, 2018

THIS DOCUMENT CONTAINS INFORMATION THAT IS SUBJECT TO CHANGE WITHOUT NOTICE.