

SIGNIFY  
TRAVEL IN TIME  
**BROADWAY**  
- MARKET -

*Retro Turntable Briefcase*





Model Number: EA1388

**INSTRUCTION MANUAL**



AFTER SALES SUPPORT

  1300 777 137

# Welcome

Congratulations on choosing to buy a Signify product.

All products brought to you by Signify are manufactured to the highest standards of performance and safety, and, as part of our philosophy of customer service and satisfaction, are backed by our comprehensive 1 Year Warranty and customer technical support line.

This comprehensive instruction manual will provide you with a detailed guide on how to operate your product and will also assist you in troubleshooting any problems that you may encounter.

If you have any queries regarding the use of this product, please feel free to phone our technical support line for some friendly advice. If you are experiencing difficulties or believe that the product may have a technical fault, we will assist you in rectifying the issue. We can generally solve most problems simply and quickly over the phone, so please always phone us first!

We are sure that you will enjoy using this product and you can expect to gain years of service from this product when it is used and maintained in the correct manner.

# Contents

|  |    |
|--|----|
| Welcome                                      | 02 |
| Warranty Details                             | 04 |
| General Information and Safety Instructions  | 05 |
| Product Overview                             | 08 |
| Getting Started                              | 11 |
| Instructions                                 | 12 |
| Handling Vinyl Records                       | 12 |
| Playing Vinyl Records                        | 12 |
| Playing a USB Drive/Micro SD Card            | 13 |
| Playback Controls                            | 13 |
| Using the Headphone Output                   | 14 |
| Using the Auxiliary Input                    | 14 |
| Using the RCA Audio Output                   | 15 |
| Replacing the Stylus                         | 16 |
| Frequently Asked Questions                   | 18 |
| Repair and Refurbished Goods or Parts Notice | 19 |
| Other Useful Information                     | 20 |
| Cleaning and Maintenance                     | 20 |
| Storage                                      | 20 |
| Responsible Disposal                         | 21 |
| Specification Table                          | 21 |



# SIGNIFY

## Retro Turntable Briefcase Warranty Details

---

REGISTER YOUR PURCHASE AT [www.aldi.com.au/en/about-aldi/product-registration/](http://www.aldi.com.au/en/about-aldi/product-registration/) TO KEEP UP-TO-DATE WITH IMPORTANT PRODUCT INFORMATION

---

The product is guaranteed to be free from defects in workmanship and parts for a period of 12 months from the date of purchase. Defects that occur within this warranty period, under normal use and care, will be repaired, replaced or refunded at our discretion. The benefits conferred by this warranty are in addition to all rights and remedies in respect of the product that the consumer has under the Competition and Consumer Act 2010 and similar state and territory laws.

Our goods come with guarantees that cannot be excluded under the Australian Consumer Law. You are entitled to a replacement or refund for a major failure and for compensation for any other reasonably foreseeable loss or damage. You are also entitled to have the goods repaired or replaced if the goods fail to be of acceptable quality and the failure does not amount to a major failure.

---

AFTER SALES SUPPORT

  1300 777 137

 [service@unclebills.com.au](mailto:service@unclebills.com.au)

MODEL: EA1388 PRODUCT CODE: 63818 12/2018



# General Information and Safety Instructions

## RETAIN FOR FUTURE USE

Read this manual thoroughly before first use, even if you are familiar with this type of product. The safety precautions enclosed herein reduce the risk of fire; electric shock and injury when correctly adhered to. Please keep this user manual in a safe place along with your purchase receipt, warranty card and carton for future reference. If applicable, pass these instructions and packaging on to the next owner of the product. Always follow basic safety precautions and accident prevention measures when using an electrical product.

1. Read all instructions before using the Turntable Briefcase.
2. Never allow children to play with electrical equipment.
3. Do not use the Turntable Briefcase for anything other than its intended use.
4. Before turning on, ensure the electrical voltage and frequency of the circuit corresponds to those indicated on the rating label of the power adaptor.
5. Do not allow the Turntable Briefcase, its power adaptor, cord or plug to come into contact with water or any other liquid.
6. The Turntable Briefcase is not intended to be operated by means of an external timer or any type of separate remote control system.
7. The use of attachments not recommended or sold by the manufacturer is dangerous and may cause fire, electric shock or injury.
8. This Turntable Briefcase is intended to be used indoors, for household use only. Do not use the Turntable Briefcase outdoors.
9. Keep the Turntable Briefcase, its power adaptor, cord and plug out of direct sunlight.
10. Do not use an extension cord with this Turntable Briefcase unless completely necessary. If an extension cord is used please ensure that it has a rating equal or exceeding the rating of the power adaptor.
11. Do not pull or carry by the power cord, use the cord as a handle, close a door on the cord, or pull the cord around sharp edges or corners. Keep the cord away from heated surfaces.
12. Do not bend or damage the power cord.
13. Always unplug the Turntable Briefcase when not in use. To disconnect from the power supply, first ensure the power switch is turned off, then grip the plug and pull from the power socket. Never pull by the cord. The power plug must be removed from the power socket before cleaning, servicing, or maintenance.
14. Unplug the Turntable Briefcase in cases of electrical storms to protect against the possibility of power surges damaging the Turntable.
15. Never force the plug into an outlet.

# General Information and Safety Instructions (cont.)

16. Ensure that power sockets are not overloaded by operating several electrical products that exceed the power supply of the socket. Review the rating label of each electrical product being operated to ensure that they do not exceed the capacity of the power socket. Always turn off and unplug any electrical product that is not being used.
17. Never operate the Turntable Briefcase with wet hands, submerge under water or spill liquids into the unit.
18. Always turn the Turntable Briefcase off and disconnect from the power source before cleaning. Never use liquid cleaners, use a soft dry (or slightly damp) cloth to wipe over.
19. Do not place the Turntable Briefcase near a hot burner (gas or electric), heat sources or open flames.
20. Improper installation may result in the risk of fire, electric shock and/or injury to persons.
21. If the power adaptor or its cord or plug is damaged, do not use the Turntable Briefcase. Please contact the After Sales Support Line for assistance.
22. Always ensure that the power adaptor and cord are placed in a safe location to ensure that they cannot be stepped on or cannot pose as a tripping hazard. Do not place any items on or against the power adaptor and cord.
23. The manufacturer and retailer are not responsible for any eventual damages caused by improper or faulty use.
24. The Turntable Briefcase and its power adaptor have no user serviceable parts contained within (with the exception of the stylus). Do not attempt to repair, disassemble or modify the Turntable Briefcase or its power adaptor.

**NOTE:** See page 16 for further details on how to replace the stylus.

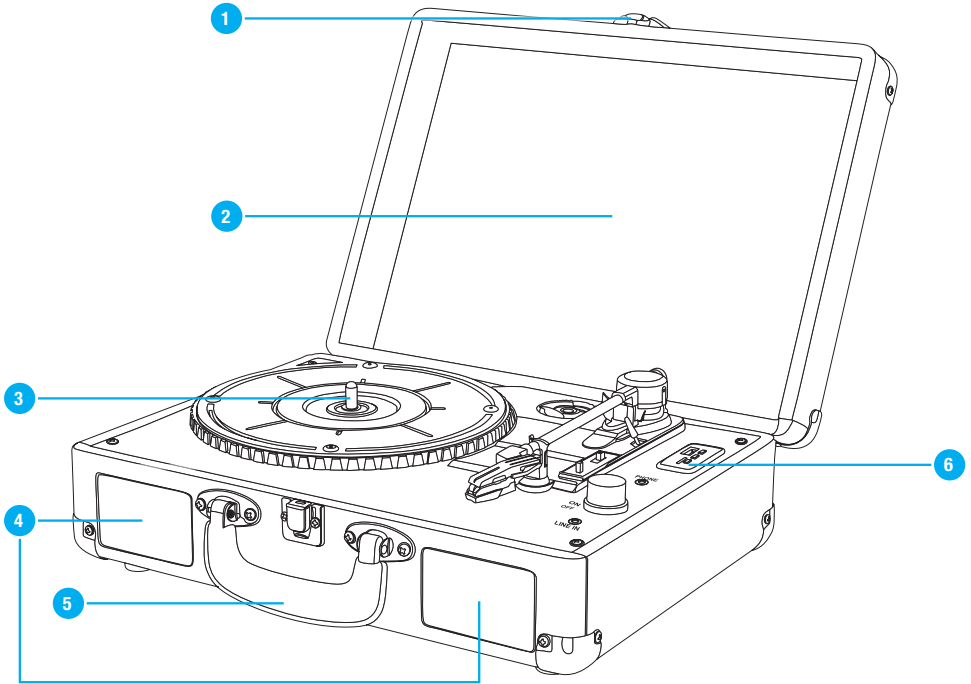
25. This Turntable Briefcase is not intended for use by persons (including children) with reduced physical, sensory or mental capabilities or lack of experience and knowledge, unless they have been given supervision or instruction concerning use of the Turntable Briefcase by a person responsible for their safety. Children should be supervised to ensure they do not play with the Turntable Briefcase.
26. Ensure that all packaging and plastic bags that were included in the Turntable Briefcase gift box are kept out of reach from children to avoid potential danger of suffocation.
27. Do not use the Turntable Briefcase on an unstable surface.
28. The Turntable Briefcase must ONLY be powered by the power adaptor that is supplied with the product. Do not use any other power adaptor. If you experience difficulties with the power adaptor supplied, please contact the After Sales Support Line for assistance.
29. Be extremely careful when unpacking or relocating the Turntable Briefcase and its power adaptor. Ensure that the Turntable Briefcase and power adaptor are not dropped, bumped or have excessive force applied to it. Impacts such as these can damage the product and its internal components.

# General Information and Safety Instructions (cont.)

30. We recommend that, where possible, to avoid moving the unit unnecessarily once placed.
31. For the protection of the Turntable Briefcase, we recommend that it is placed on a protected surface to prevent any damage.
32. If the Turntable Briefcase has been exposed to strong fluctuations in temperature (for example, after transport), do not switch it on immediately. Moisture and condensation could damage the equipment. Do not switch on the equipment until it has reached room temperature.
33. The Turntable Briefcase should always be repacked in its original packaging whenever transporting to prevent any possible damage to the device.
34. Where the mains plug or an appliance coupler is used as the disconnect device, the disconnect device shall remain readily operable.

# Product Overview

## Front View

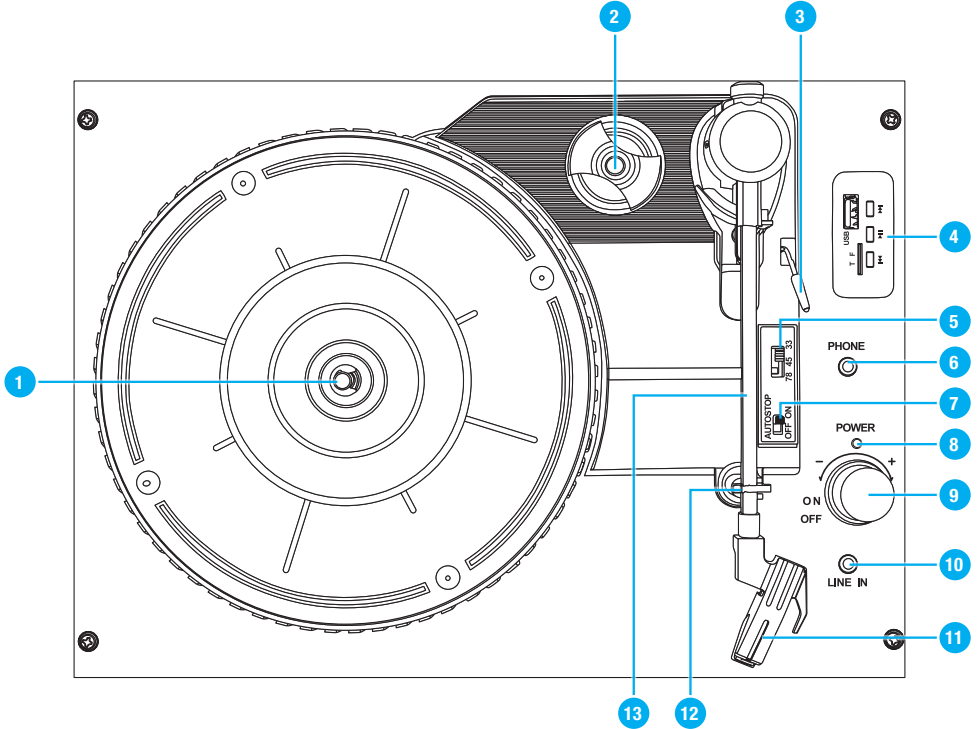


1. Lock Latch
2. Dust Cover
3. Turntable
4. Speakers
5. Handle
6. Control Panel (for USB drive/Micro SD card playback)



# Product Overview (cont.)

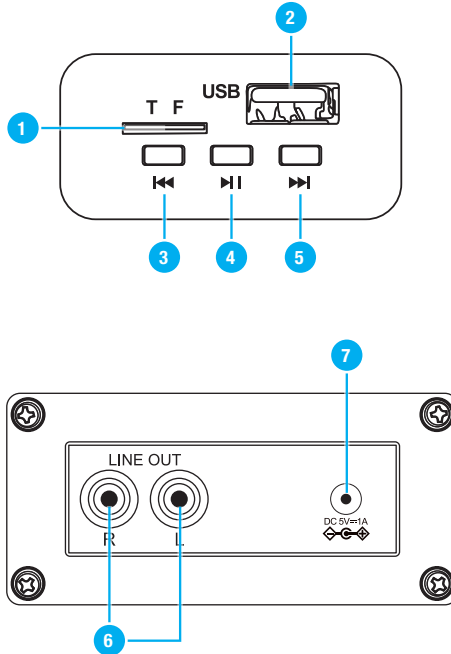
## Turntable



- |   |                          |
|---|--------------------------|
| 1. Spindle  | 8. Power Indicator Light |
| 2. 45 RPM Adaptor                                       | 9. Power/Volume Dial     |
| 3. Cue Lever  | 10. Auxiliary Input      |
| 4. Control Panel (for USB drive/Micro SD card playback) | 11. Stylus               |
| 5. Speed Selection Switch (33, 45, 78 RPM)              | 12. Tone Arm Lock        |
| 6. Headphone Output                                     | 13. Tone Arm             |
| 7. Auto Stop Switch                                     |                          |

# Product Overview (cont.)

## Front and Rear Control Panels



1. Micro SD Input
2. USB Input
3. ⏮ Button
4. ⏪ Button
5. ⏩ Button
6. RCA Audio Output
7. DC Power Input

Included (not pictured):  
1x Power Adaptor, 1x Instruction Manual and 1x Warranty Card.

# Getting Started

## Before First Use

---

Prior to using your Turntable Briefcase, please read all safety and operating instructions thoroughly. Please ensure you follow the steps below before using this device. We recommend you keep the original packaging for storing your Turntable Briefcase when not in use.

## Removing the Turntable Protective Packaging

---

1. Unlock the lock latch in front of the briefcase, and lift the dust cover to reveal the turntable.
2. Peel off the protective tape, and remove the square polystyrene spindle protector.
3. Remove the cable tie from the tone arm.
4. Remove the protective cover from the stylus cartridge.

## Power Input

---

Once all packaging has been removed, insert the power adaptor into a power socket and connect the other end to the DC power input (rear panel of the unit) and switch the power input on.

# Instructions

## Handling Vinyl Records

---

**NOTE:** Only handle vinyl records with clean hands and hold them by the edge or the label. Do not touch the record grooves.

- Keep your vinyl records in protective sleeves when not in use to avoid dust and scratches.
- Store vinyl records upright. Records stored horizontally may bend and warp.
- Avoid placing vinyl records in direct sunlight, close to any heat source (radiator, stoves etc.) or in a location that may be subject to vibration, excessive dust, heat, cold or moisture.
- To clean a vinyl record, gently wipe the surface in a circular motion using a soft anti-static cloth.

## Playing Vinyl Records

---

To play a vinyl record, follow the steps below.

1. Turn the **Power/Volume Dial** (No. 9 on the Turntable parts list) clockwise until you hear a 'click' sound. The LED Power Indicator Light will illuminate red, indicating that the Turntable Briefcase is now turned on.

**IMPORTANT:** Before playing a vinyl record, turn down the volume of the Turntable Briefcase to avoid possible loud crackling noises. The crackling noises made by the stylus coming into contact with the vinyl record could damage the unit. Wait until the stylus is completely placed on the vinyl record, and then turn up the volume.

2. Set the **Auto Stop Switch** (No. 7 on the Turntable parts list) to the ON position. The unit will now be set to automatically stop after the completion of play of the vinyl record. If the **Auto Stop Switch** is set to the OFF position, the unit will not stop automatically.
3. Choose the desired playing speed using the **Speed Selection Switch** (No. 5 on the Turntable parts list). Select between 33, 45 and 78 RPM.

**NOTE:** When playing a 45 RPM record, use the included 45 RPM adaptor on the record spindle.

4. Carefully place the vinyl record on the Turntable.
5. Unlock the Tone Arm Lock by moving it up and away from the Tone Arm itself.
6. Raise the Tone Arm using the Cue lever, or carefully with your hand.
7. Place the Tone Arm vertically over the first track of the record or over the outer edge of the vinyl record. The Turntable will start spinning.

**IMPORTANT:** If an auxiliary cable is connected to the unit, the Turntable will not spin.

8. Lower the stylus onto the vinyl record using the Cue Lever.

# Instructions (cont.)

- Turn the **Power/Volume Dial** clockwise to turn the volume up, or turn the **Power/Volume Dial** anticlockwise to turn the volume down.
- To stop playing, lift the Tone Arm and place it back into the armrest. Secure the Tone Arm once more by engaging the Tone Arm Lock. Cover the stylus with the protective cover if needed.

## Playing a USB Drive/Micro SD Card

---

You can play digital music from a USB drive or micro SD card through the Turntable Briefcase.

- Turn the Power/Volume Dial (No. 9 on the Turntable parts list) clockwise until you hear a 'click' sound. The LED Power Indicator Light will illuminate red, indicating that the Turntable Briefcase is now turned on.

**IMPORTANT:** Before playing music/media from a USB drive or micro SD card, turn down the volume of the Turntable Briefcase to avoid a possible loud output of noise from the speakers. Wait until the music/media is playing, and then turn up the volume.

**IMPORTANT:** Before inserting a USB drive or micro SD card into the unit, ensure that the Turntable is not spinning.

- Insert a USB drive or micro SD card into USB input or micro SD input. Any music loaded on the storage device will automatically begin to play.

## Playback Controls

---

The below controls only apply to music playback through a USB drive or micro SD card.

| Button | Function               |
|--------|------------------------|
| ⏮      | Skip to Previous Track |
| ⏸      | Pause/Play Track       |
| ⏭      | Skip to Next Track     |

# Instructions (cont.)

## Using the Headphone Output

---

The Turntable Briefcase features a 3.5mm headphone output (No. 6 on the Turntable parts list). When headphones or external speakers with a 3.5mm pin are attached to the Turntable Briefcase via the headphone output, all sound will be diverted to the headphones or external speakers, and no sound will be played via the unit's inbuilt speakers. Ensure that the 3.5mm plug is removed from the Turntable Briefcase when required, to ensure that sound is played via the unit's inbuilt speakers once again.

## Using the Auxiliary Input

---

The Turntable Briefcase features a 3.5mm auxiliary input (No. 10 on the Turntable parts list) which allows audio from various media devices with a 3.5mm output jack such as CD players, smart phones, tablets or computers, to be played through the unit's inbuilt speakers. To use the auxiliary input, follow the steps below.

1. Turn the **Power/Volume Dial** (No. 9 on the Front and Rear Control Panels parts list) clockwise until you hear a 'click' sound. The LED Power Indicator Light will illuminate red, indicating that the Turntable Briefcase is now turned on.

**IMPORTANT:** Before playing music/media from the desired device, turn down the volume of the Turntable Briefcase to avoid a possible loud output of noise from the speakers. Wait until the music/media is playing, and then turn up the volume.

2. Connect one end of the auxiliary cable (not included) into the auxiliary port on the Turntable Briefcase.
3. Connect the other end of the auxiliary cable into the desired media device.
4. Use the media device (not the Turntable Briefcase) to control playback.

**NOTE:** The volume can be controlled on both the connected media device and the Turntable Briefcase itself.

**IMPORTANT:** If an auxiliary cable is connected to the Turntable Briefcase, the turntable will not spin.

# Instructions (cont.)

## Using the RCA Audio Output

---

The Turntable Briefcase features a RCA audio output located on the rear of the unit, which allows you to connect the unit to external speakers. To use the RCA audio output, follow the steps below.

1. Turn the **Power/Volume Dial** (No. 9 on the Front and Rear Control Panels parts list) clockwise until you hear a 'click' sound. The LED Power Indicator Light will illuminate red, indicating that the Turntable Briefcase is now turned on.

**IMPORTANT:** Before playing music/media from the desired device, turn down the volume of the Turntable Briefcase to avoid a possible loud output of noise from the speakers. Wait until the music/media is playing, and then turn up the volume.

2. Plug the AV connections of the RCA cable (not included) into the RCA audio output.

**NOTE:** The red jack needs to connect to the red socket, and the white jack needs to connect to the white socket.

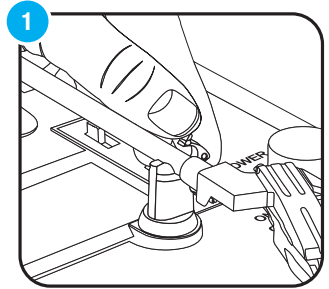
3. Insert the other end/s of the RCA cable (not included) into the audio input of the external speakers.

**NOTE:** The volume can only be controlled on the connected speakers.

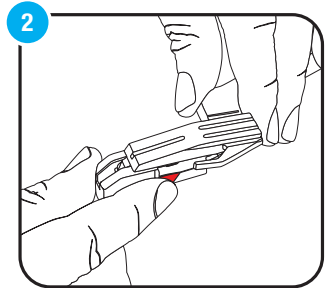
# Instructions (cont.)

## Replacing the Stylus

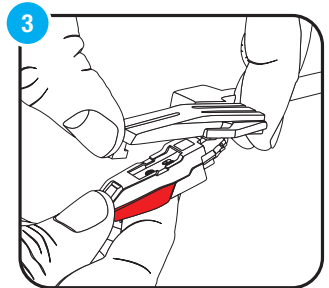
1. Unlock Tone Arm Lock by moving it up and away from the Tone Arm itself.



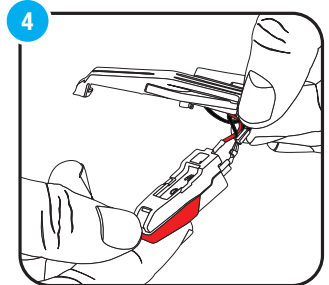
2. Remove the protective cover from the stylus cartridge to expose the needle.



3. Separate the cartridge from the cartridge holder.



4. Gently pull the audio-lines from the cartridge, taking care to pull from the terminal connector and not the wire itself.

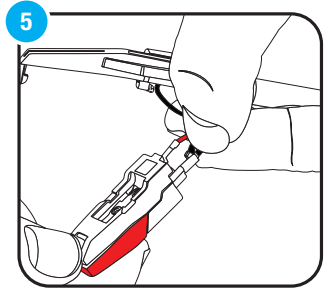


**NOTE:** Please exercise care whilst performing this operation so as to avoid damaging the Tone Arm and audio-lines.

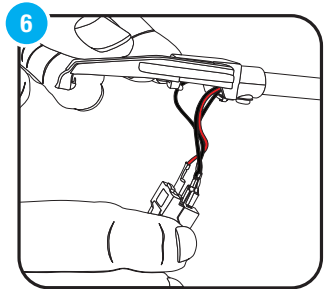


# Instructions (cont.)

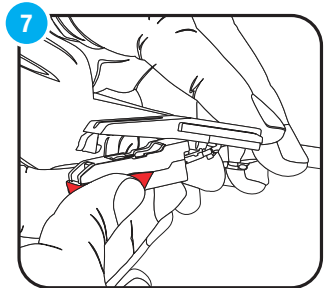
5. Carefully insert the audio-lines into the new cartridge.



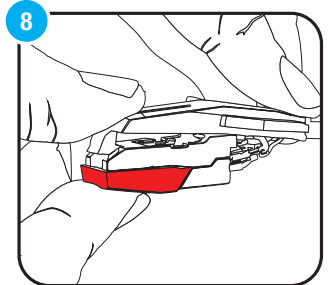
6. Make sure the audio-lines are not touching each other.



7. Carefully slide the cartridge into the cartridge holder.



8. Gently clip the cartridge into the cartridge holder.



# Frequently Asked Questions

**Q:** Can I carry the Turntable Briefcase by the handle?

**A:** Yes. But only when the dust cover is locked down using the latch. Never carry the Turntable Briefcase without the dust cover locked down.

**Q:** Why is the Turntable Briefcase not powering on?

**A:** Ensure that each end of the power adaptor has been correctly and securely connected, and the power socket has been switched on.

**Q:** Why is there no sound coming from the speakers?

**A:** Ensure there is no cable connected to the headphone input or the RCA audio output.

**Q:** Why is the Turntable not spinning?

**A:** If an auxiliary cable is connected to the unit, the turntable will not spin. Ensure that there is no auxiliary cable connected.

**Q:** Why is the sound distorted when playing a vinyl record?

**A:** The stylus may be damaged. Remove and replace it with a new stylus (see page 16 for further details).



## Turntable Briefcase

# Repair and Refurbished Goods or Parts Notice

Unfortunately, from time to time, faulty products are manufactured which need to be returned to the Supplier for repair.

Please be aware that if your product is capable of retaining user-generated data (such as files stored on a computer hard drive, telephone numbers stored on a mobile telephone, songs stored on a portable media player, games saved on a games console or files stored on a USB memory stick) during the process of repair, some or all of your stored data may be lost.

**We recommend you save this data elsewhere prior to sending the product for repair.**

You should also be aware that rather than repairing goods, we may replace them with refurbished goods of the same type or use refurbished parts in the repair process.

**Please be assured though, refurbished parts or replacements are only used where they meet ALDI's stringent quality specifications.**

If at any time you feel your repair is being handled unsatisfactorily, you may escalate your complaint. Please telephone us on 1300 777 137 or write to us at:

UNCLE BILL'S AUSTRALIA PTY LTD  
48B Egerton Street  
Silverwater NSW 1811 Australia

1300 777 137  
Opening Hours - 9:00am - 4:30pm (Mon-Fri), 9:00am - 3:00pm (Sat)  
service@unclebills.com.au  
www.signifyelectronics.com.au



# Other Useful Information

## Cleaning and Maintenance

---

Before cleaning the Turntable Briefcase, ensure the unit is switched off and disconnected from the power source.

The Turntable Briefcase is likely only to require regular “dusting” to keep it clean. Use a standard duster, or dry soft microfibre cloth to remove the dust from the unit.

If the Turntable Briefcase becomes soiled with anything other than dust on its exterior, clean the exterior of the unit by wiping over the surface with a slightly damp cloth and then polish with a soft dry cloth. Ensure that no moisture or liquid enters the Turntable Briefcase, particularly around the control panel and dials.

Be careful when wiping over the Turntable Briefcase, that you do not apply too much pressure, as there is a risk that you may break parts.

Do not use detergents or abrasive cleaners, and do not allow moisture, water or other liquid to enter the Turntable Briefcase.

## Storage

---

When the Turntable Briefcase is not in use, disconnect it from the power source and store in a cool, dry and well ventilated location out of direct sunlight. Ensure that it is not subject to humidity.

# Other Useful Information (cont.)

## Responsible Disposal

---

At the end of its working life, do not throw this appliance out with your household rubbish. Electrical and electronic products contain substances that can have a detrimental effect on the environment and human health if disposed of inappropriately. Observe any local regulations regarding the disposal of electrical consumer goods and dispose of it appropriately for recycling. Contact your local authorities for advice on recycling facilities in your area.

Please keep the original packaging carton and materials in a safe place. It will help to prevent any damage if the product needs to be transported in the future. In the event it is to be disposed of, please recycle all packaging material where possible.


If you require another copy of this instruction manual, please contact [service@unclebills.com.au](mailto:service@unclebills.com.au) to obtain an electronic copy.

The Turntable Briefcase has been fully tested and meets all requirements as set out by the below testing standards:

AS/NZS 60065

## Specification Table

---

|                         |   |
|-------------------------|---|
| MODEL:                  | EA1388  |
| COLOUR:                 | TAN   |
| UNIT POWER CONSUMPTION: | 5W  |
| AC ADAPTOR MODEL:       | GQ05-050100-AA  |
| ADAPTOR INPUT VOLTAGE:  | 100-240V~ 50/60Hz 0.3A MAX CLASS II   |
| ADAPTOR OUTPUT VOLTAGE: | 5.0V  1A |
| SPEAKERS:               | 2 x 3W STEREO SPEAKERS  |
| RPM:                    | SUPPORTS PLAYBACK SPEEDS 33.33, 45, 78 RPM  |
| RECORD SIZE SUPPORTED:  | 7" = 17.7cm<br>10" = 25.5cm SP<br>12" = 30cm LP   |
| VERSION NO:             | 1.6   |
| ISSUE DATE:             | 15 <sup>th</sup> August, 2018   |

THIS DOCUMENT CONTAINS INFORMATION THAT IS SUBJECT TO CHANGE WITHOUT NOTICE.

# Notes

# Notes

