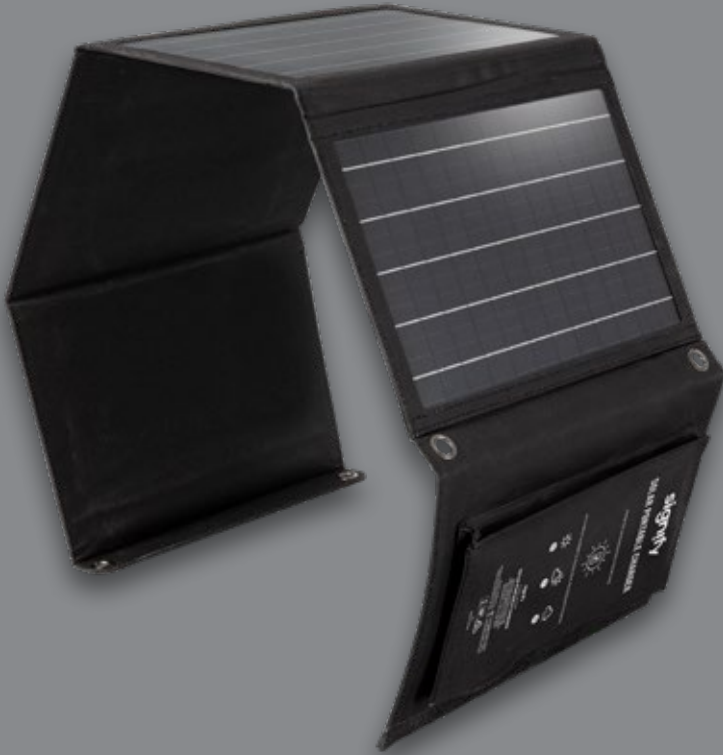


signify™



SOLAR PORTABLE CHARGER

Model Number: EA2265

INSTRUCTION MANUAL



WELCOME

Congratulations on choosing to buy a Signify product.

All products brought to you by Signify are manufactured to the highest standards of performance and safety, and, as part of our philosophy of customer service and satisfaction, are backed by our comprehensive 1 Year Warranty and customer technical support line.

This comprehensive instruction manual will provide you with a detailed guide on how to operate your product and will also assist you in troubleshooting any problems that you may encounter.

If you have any queries regarding the use of this product, please feel free to phone our technical support line for some friendly advice. If you are experiencing difficulties or believe that the product may have a technical fault, we will assist you in rectifying the issue. We can generally solve most problems simply and quickly over the phone, so please always phone us first!

We are sure that you will enjoy using this product and you can expect to gain years of service from this product when it is used and maintained in the correct manner.

CONTENTS

Welcome	02
Warranty Details	04
General Information and Safety Instructions	05
Product Overview	08
Solar Portable Charger	08
Junction Box	09
Carabiners	09
Getting Started	10
Instructions	12
Attaching the Solar Portable Charger	13
Setting up Solar Portable Charger when not attaching it to an Object	15
Charging Devices using your Solar Portable Charger	16
Repair and Refurbished Goods or Parts Notice	18
Frequently Asked Questions	19
Other Useful Information	20
Cleaning and Maintenance	20
Storage	20
Responsible Disposal	21
Specification Table	21



signify™

Solar Portable Charger

Warranty Details

**REGISTER YOUR PURCHASE AT www.aldi.com.au/en/about-aldi/product-registration/
TO KEEP UP-TO-DATE WITH IMPORTANT PRODUCT INFORMATION**

The product is guaranteed to be free from defects in workmanship and parts for a period of 12 months from the date of purchase. Defects that occur within this warranty period, under normal use and care, will be repaired, replaced or refunded at our discretion. The benefits conferred by this warranty are in addition to all rights and remedies in respect of the product that the consumer has under the Competition and Consumer Act 2010 and similar state and territory laws.

Our goods come with guarantees that cannot be excluded under the Australian Consumer Law. You are entitled to a replacement or refund for a major failure and for compensation for any other reasonably foreseeable loss or damage. You are also entitled to have the goods repaired or replaced if the goods fail to be of acceptable quality and the failure does not amount to a major failure.

AFTER SALES SUPPORT

04   1300 777 137

 service@unclebills.com.au

MODEL: EA2265 PRODUCT CODE: 711503 03/2023



GENERAL INFORMATION AND SAFETY INSTRUCTIONS

RETAIN FOR FUTURE USE

Read this manual thoroughly before first use, even if you are familiar with this type of product. The safety precautions enclosed herein reduce the risk of fire; electric shock and injury when correctly adhere to. Please keep this instruction manual in a safe place along with your purchase receipt, warranty certificate and carton for future reference. If applicable, pass these instructions and packaging on to the next owner of the product. Always follow basic safety precautions and accident prevention measures when using this product.

1. Read all instructions before using the Solar Portable Charger.
2. The Solar Portable Charger is not intended for use by persons (including children) with reduced physical, sensory or mental capabilities, or lack of experience and knowledge, unless they have been given supervision or instruction concerning use of the product by a person responsible for their safety. Children should be supervised to ensure they do not play with the Solar Portable Charger.
3. Do not use the Solar Portable Charger for anything other than its intended use.
4. Do not immerse the Solar Portable Charger in water or any other liquids.
5. Do not use the Solar Portable Charger if it has been dropped or damaged in any way. Contact our After Sales Support line on 1300 137 777 for further advice.
6. This product is not a toy. Keep the Solar Portable Charger out of reach of children.
7. The manufacturer and retailer are not responsible for any eventual damages caused by improper or faulty use.
8. Do not pull or carry the Solar Portable Charger by the USB charging cable (not supplied).
9. Never force the USB charging cable (not supplied) into the Solar Portable Charger's USB ports.
10. Always unplug the USB charging cable (not supplied) from the Solar Portable Charger when it is not charging your device.
11. The USB charging cable (not supplied) must be removed from the Solar Portable Charger before cleaning, servicing, or maintenance.
12. Do not place the Solar Portable Charger near a hot burner (gas or electric), other heat emitting sources or open flames.
13. The Solar Portable Charger is intended for private use and not suitable for commercial purposes.
14. Never touch the Solar Portable Charger with wet or damp hands.
15. Do not place the Solar Portable Charger such that there is a risk of it falling into a body of water.
16. The Solar Portable Charger contains no user-serviceable parts inside. Do not try to dismantle, modify, or repair the device or its accessories yourself. Contact the after sales support for advice on 1300 777 137.

GENERAL INFORMATION AND SAFETY INSTRUCTIONS (CONT.)

17. Never attempt to clean the Solar Portable Charger by immersing it in water and do not use a steam cleaner to clean it. Otherwise, you could damage the Solar Portable Charger.
18. When the Solar Portable Charger is not in use or being cleaned, it is recommended to place it in the original packaging and store in a clean dry location.
19. Never leave the Solar Portable Charger unattended when in use. When charging devices using the Solar Portable Charger, you should always maintain constant observation to monitor the charging process and react to potential problems that may occur.
20. Do not allow the Solar Portable Charger to come into contact with sharp objects as this will cause scratches and damage to the unit. This will void the warranty.

IMPORTANT: The Solar Portable Charger can not store electricity, it uses energy from the sun to charge devices (USB rechargeable) in real time.

IMPORTANT: Conditions like the quality and consistency of sunlight will affect the charging process since the Solar Portable Charger relies purely on solar power.

NOTE: For optimum charging results, adjust the angle of the solar panels so they face the sun directly.

NOTE: The Solar Portable Charger will only function where there is direct sunlight available. The Solar Portable Charger will not work in conditions such as when it is overcast, night-time or if its panels are blocked from direct sunlight e.g. positioned in a shady area.

NOTE: The solar panels of the Solar Portable Charger may get hot from time to time, while being exposed to the sun for long periods of time. This is normal and not a product fault.

WARNING: Repairs to the Solar Portable Charger should only be performed by a qualified technician. Improper repairs may place the user at serious risk and will void the warranty.

WARNING: The Solar Portable Charger can only charge compatible devices with rechargeable batteries. Attempting to charge non-compatible devices or devices with non-rechargeable batteries may cause product failure, damage the Solar Portable Charger or cause harm to the user.

GENERAL INFORMATION AND SAFETY INSTRUCTIONS (CONT.)

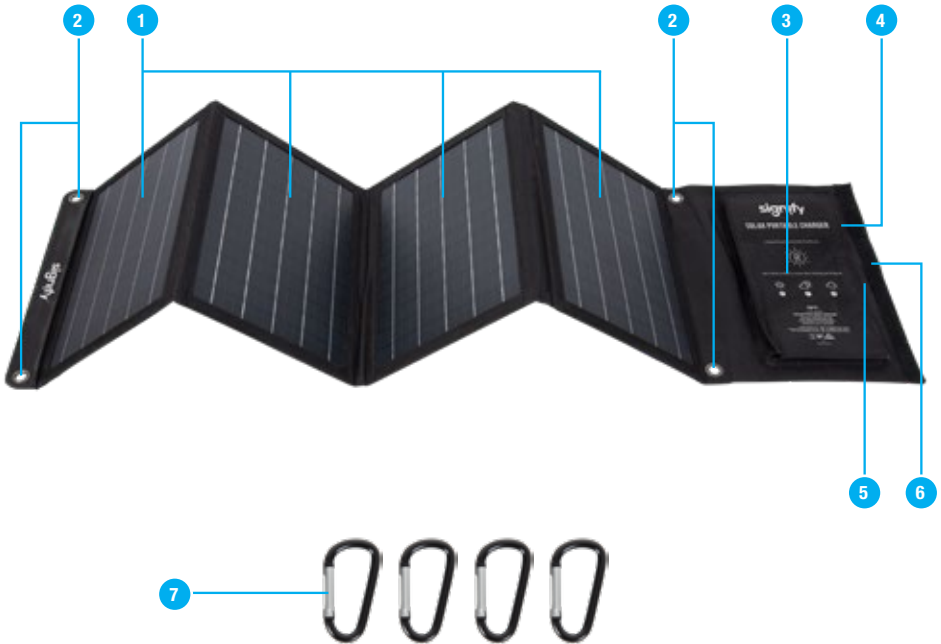
WARNING: The devices being charged using the Solar Portable Charger may not be suitable for long term sunlight exposure. Excessive heat may cause damage to them. Always refer to the guidelines provided by the manufacturer of the device being charged to avoid any hazard, or possible product failure.



Read this instruction manual carefully before using the Solar Portable Charger and keep it in a safe place for future reference.

PRODUCT OVERVIEW

Solar Portable Charger



1. Solar Panels
2. Eyelets (for attaching the carabiners)
3. Storage Pouch
4. Junction Box
5. Hook and Loop Tape (Storage Pouch)
6. Hook and Loop Tape (Solar Portable Charger)
7. 4 x Carabiners

Included (not pictured):
Instruction Manual, Getting Started Guide, Warranty Certificate.

PRODUCT OVERVIEW (CONT.)

Junction Box

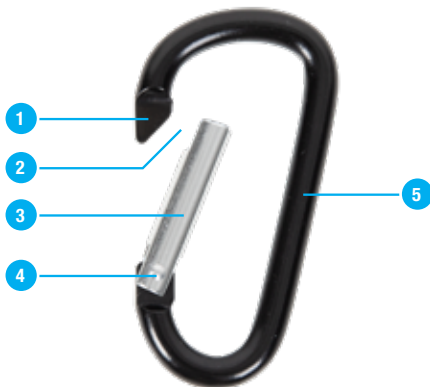
1. Current Display
2. USB Port 1
3. USB Port 2
4. USB Dust Cover 1
5. USB Dust Cover 2



WARNING: Do not attempt to remove the junction box from the Solar Portable Charger.

Carabiners

1. Nose
2. Gate Opening
3. Gate
4. Hinge
5. Spine



GETTING STARTED

Before First Use

Prior to using your Solar Portable Charger, please read all safety and operating instructions thoroughly. Please ensure you follow the steps below before using this product.

1. Unpack the product but keep all packaging materials until you have made sure your new Solar Portable Charger is undamaged and in good working order.
2. Plastic wrapping can be a suffocation hazard for babies and children, so ensure all packaging materials are kept out of their reach.
3. We recommend you keep the original packaging for storing your Solar Portable Charger when not in use.

Opening the Solar Portable Charger

Your Solar Portable Charger comes folded and held together by a hook and loop tape (Fig. 1).

Place the Solar Portable Charger on a flat, dry surface. Grasp one of the corners of the visible side edge of the Solar Portable Charger (Fig. 2), and gently start pulling towards you (Fig. 3) until the hook and loop tape is completely separated (Fig. 4). Unfold the Solar Portable Charger until all four solar panels and the storage pouch are completely exposed and facing upwards (Fig. 5).



Fig. 1



Fig. 2



Fig. 3



Fig. 4



Fig. 5

Closing the Solar Portable Charger

Place the Solar Portable Charger on a flat, dry surface so that the solar panels and the storage pouch are facing upwards (Fig. 5). Holding the edge of the Solar Portable Charger which is furthest away from the storage pouch (Fig. 6), fold the Solar Portable Charger one solar panel at a time (Fig. 7), towards the storage pouch, until the Solar Portable Charger is completely folded and the hook and loop tape is aligned (Fig. 8). Now gently tap on the fabric above the hook and loop tape (Fig. 9) until the Solar Portable Charger is securely closed.



Fig. 6



Fig. 7



Fig. 8



Fig. 9

GETTING STARTED (CONT.)

NOTE: Before closing the Solar Portable Charger, always check that all USB charging cables (not supplied) have been disconnected (removed) from the USB ports, and all the carabiners have been unhooked from the eyelets and placed in the storage pouch.

WARNING: Do not store any sharp objects inside the storage pouch as they can pierce the storage pouch and cause damage to the Solar Portable Charger. This will void the warranty.

WARNING: The solar panels and junction box must be checked regularly for damage. Do not use the product if these parts are damaged. In case of damage, contact our After Sales Support line for advice.

WARNING: The Solar Portable Charger is weather resistant and will fend off low pressure water/rain from any direction. However, the Solar Portable Charger is not built for use in high pressure water/heavy rain, and it cannot be totally submerged underwater. If exposed to heavy rain, make sure to dry completely before using it again.

INSTRUCTIONS

The Solar Portable Charger is a lightweight, compact, and rugged charging device made of high power conversion monocrystalline solar cells. Suitable for all outdoor activities such as camping and hiking, the Solar Portable Charger is versatile, convenient and can be folded up so that it fits easily into your backpack.

Use the supplied metal carabiners to attach the Solar Portable Charger to a backpack, tent, tree, camping chair or the side of your awning. Alternatively, if you do not need additional support and have sufficient open space, simply lay the Solar Portable Charger on the ground, or drape it over the bonnet or windscreen of your vehicle.

NOTE: The Solar Portable Charger does not hold a charge; it produces power when it is exposed to sunlight. You can plug your smartphone directly into the Solar Portable Charger using a USB charging cable (not supplied) or use it to recharge a portable power storage device (such as a power bank) for later use. The Solar Portable Charger is best used for recharging devices such as smartphones, power banks, DSLRs, headlamps, fitness trackers, lighthouse lanterns, small USB devices and small portable power stations.

NOTE: The Solar Portable Charger will only charge USB rechargeable devices that need a 5V DC input voltage (no extra voltage). The Solar Portable Charger does not support charging laptops and large portable power stations.

WARNING: The Solar Portable Charger can only charge compatible devices with rechargeable batteries. Attempting to charge non-compatible devices or devices with non-rechargeable batteries may cause product failure, damage the Solar Portable Charger or harm to the user.

INSTRUCTIONS (CONT.)

Attaching the Solar Portable Charger

There are 4 x metal carabiners included for your convenience (see page 8). The metal carabiners can be used to attach the Solar Portable Charger to a backpack, tent, tree, annex or any other suitable object.



Fig. 10

1. Please follow the instructions on page 10 to open (unfold) the Solar Portable Charger.
2. The Solar Portable Charger has four eyelets (see page 8). The Solar Portable Charger can be attached to an object using either two, or all four eyelets. You will need to use one carabiner for each of the eyelets (Fig. 10).

NOTE: We recommend that you use all four eyelets, where possible, to attach the Solar Portable Charger to an object. This will provide overall better balance and more even weight distribution. If this is not an option, then use at least two eyelets (preferably the eyelets closest to the storage pouch) to attach the Solar Portable Charger to the object.

NOTE: To securely attach the Solar Portable Charger to an object, the object you are attaching to must have a strap, eyelet or other suitable attachment which you can attach the carabiner to.

3. Hold the carabiner in one hand and gently push the gate inwards (towards the spine of the carabiner), so that the carabiner gate is open (Fig. 11).
4. Pass the nose of the carabiner through the eyelet of the Solar Portable Charger and the strap or eyelet on the object you are attaching the Solar Portable Charger to (Fig. 12).
5. Release the gate of the carabiner so that the gate returns to its original position and the carabiner gate is now closed (Fig. 13).
6. Repeat steps 3 to 5 to attach the vacant eyelets on the Solar Portable Charger to remaining straps or eyelets on the object. The Solar Portable Charger should now be securely attached to the object (Fig. 14).



Fig. 11



Fig. 12



Fig. 13



Fig. 14

INSTRUCTIONS (CONT.)

NOTE: When attaching the Solar Portable Charger to an object, we recommend that the short edge closest to the storage pouch is at the top (facing upwards) (Fig. 15).

IMPORTANT: The storage pouch should always be closed by its own hook and loop tape. This will keep the loose contents inside the storage pouch secure and will prevent the contents from possibly falling out. However, we do recommend that while attaching the Solar Portable Charger to an object, the hook and loop edge of the storage pouch is also positioned at the top (facing upwards) (Fig. 16).

NOTE: To securely attach the Solar Portable Charger to an object such as a backpack, tent etc. ensure that the eyelets on the Solar Portable Charger and the eyelets or strap on the object are not damaged.

NOTE: The object you are attaching the Solar Portable Charger to should weigh at least 2kgs, which is the minimum weight required to carry the Solar Portable Charger.



Fig. 15



Fig. 16

INSTRUCTIONS (CONT.)

Setting up Solar Portable Charger when not attaching it to an Object

The Solar Portable Charger will perform at its peak with the solar panels angled directly towards the sun. Peak power refers to the total actual solar cell power before transmission losses from laminates and atmospheric conditions. As the Solar Portable Charger is portable and lightweight, it is possible to adjust the angle and position of your Solar Portable Charger across the course of the day, with reference to the position of the sun. If this is not something you desire, we recommend having your panels facing NORTH at an angle of between 20° and 40° from the ground (Fig. 17). This will ensure the optimum output from your solar panels across the course of the day, no matter what season.

WARNING: Do not permanently shade any part of the solar panels of the Solar Portable Charger. This will cause a drastic drop in charging performance of the Solar Portable Charger.

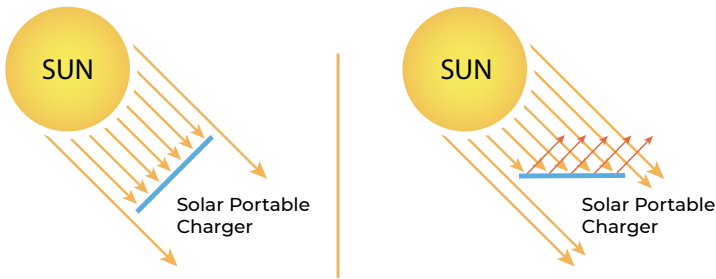
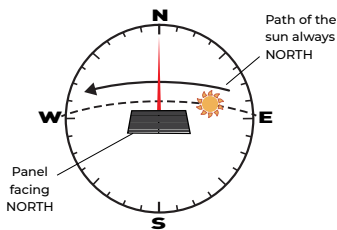


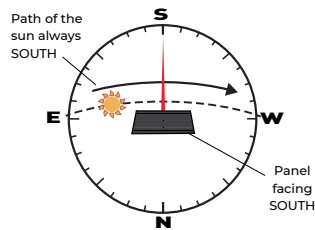
Fig. 17

In the southern hemisphere (e.g., Australia), the sun is always in the NORHERN half of the sky. Therefore, exposing the solar panels of the Solar Portable Charger NORTH, ensures the best angle to the sun across the course of the day (Fig. 18). In the northern hemisphere (e.g., United Kingdom), the sun is always in the SOUTHERN half of the sky. Therefore, exposing the solar panels of the Solar Portable Charger SOUTH, ensures the best angle to the sun across the course of the day (Fig. 19).



Southern Hemisphere

Fig. 18



Northern Hemisphere

Fig. 19

INSTRUCTIONS (CONT.)

Charging Devices using your Solar Portable Charger

Charging smartphones, power banks and other USB powered devices from the Solar Portable Charger, is as easy as inserting the USB charging cable (not supplied) into one of the USB ports located on the junction box of the Solar Portable Charger, inserting the charging end of the USB charging cable (not supplied) into the charging port on the device and placing the Solar Portable Charger in the sun.



Fig. 20

1. Open (unfold) your Solar Panel Charger following instructions on page 10 (Fig. 20).
2. Attach the Solar Portable Charger to an object using the carabiners (supplied) or lay it on a flat, dry surface where the Solar Portable Charger will not move. Refer to page 15 for how to position the Solar Portable Charger to get maximum sunlight exposure for optimum charging results.



Fig. 21

3. Undo the hook and loop tape on the storage pouch so that you can access the junction box inside (Fig. 21).
4. Remove the USB dust cover (1 or 2) from the USB port (1 or 2) (Fig. 22).



Fig. 22

5. Insert the USB end of your USB charging cable (not supplied) into the USB port on the junction box (Fig. 23). Connect the charging end of your USB charging cable (not supplied) to your device. The charging process has now commenced.



Fig. 23

6. Either place the charging device inside the storage pouch and close the hook and loop tape on the storage pouch, or store away the charging device in a location that is not exposed to the sun (e.g., inside your backpack or inside a tent) during the charging process and close whatever part of the hook and loop tape you can comfortably close on the storage pouch (Fig. 24).



Fig. 24

NOTE: If you are storing the charging device outside the storage pouch, then while closing the storage pouch, be careful to not PRESS against the charging cable (not supplied) while closing the storage pouch, as the hook and loop tape can cause wear and tear to the charging cable over time.

7. When your device is fully charged, or you have finished charging, disconnect the USB charging cable from the USB Port on the junction box of the Solar Portable Charger. Follow the instructions on page 10 for how to close (fold) the Solar Portable Charger for storage.

INSTRUCTIONS (CONT.)

NOTE: The Solar Portable Charger can measure the real time charging current, which is displayed on the current display (see page 9). The value for the charging current depends on the device being charged, sunlight intensity, orientation of the Solar Portable Charger, and specification of the USB charging cable (not supplied). E.g., if your device has an input current of 1A, the amount displayed on the current display under best charging set up will never exceed 1A. If you are charging two devices using the Solar Portable charger and each device is drawing a 1A current, then the current display will show 2A.

NOTE: The Solar Portable Charger uses Smart IC Technology which enables the Solar Portable Charger to detect your device and then deliver its fastest possible charging speed.

NOTE: The Solar Portable Charger will only charge USB rechargeable devices that need a 5V DC input voltage (no extra voltage). The Solar Portable Charger does not support charging laptops and large portable power stations.

NOTE: If the charging current is under 70mA, or the current draw from the charging device is under 200mA, then the junction box will enter a state of low current shutdown followed by restart. This is not a product fault. If this persists you should wait for better conditions or consider alternate methods to charge your device.

NOTE: The Solar Portable Charger has inbuilt overcurrent and short circuit protection. If the device being charged or the USB charging cable (not supplied) is faulty, then there is a possibility that the current draw will exceed the rated current of the charging device. The junction box will sense this spike in charging current and will shut down automatically. At this stage, you can unplug the USB charging cable (not supplied) from the USB port/s and check the USB Charging cable (not supplied) and charging device for any fault. After approximately 10 seconds, the Solar Portable Charger will reboot and restart the charging process, so once you have a working USB charging cable (not supplied) and charging device, you can follow the steps on page 16 to charge the device using the Solar Portable Charger. If the fault exists, the Solar Portable Charger will remain in shutdown. At this time, please call our After Sales Support on 1300 777 137 for advice.

WARNING: The Solar Portable Charger can only charge compatible devices with rechargeable batteries. Attempting to charge non-compatible devices or devices with non-rechargeable batteries may cause product failure, damage the Solar Portable Charger or harm to the user.

WARNING: The devices being charged using the Solar Portable Charger may not be suitable for long term sunlight exposure. Excessive heat may cause damage. Always refer to the guidelines provided by the manufacturer of the device being charged to avoid any hazard or possible product failure.



signify™

Solar Portable Charger

Repair and Refurbished Goods or Parts Notice

REGISTER YOUR PURCHASE AT www.aldi.com.au/en/about-aldi/product-registration/
TO KEEP UP-TO-DATE WITH IMPORTANT PRODUCT INFORMATION

Unfortunately, from time to time, faulty products are manufactured which need to be returned to the Supplier for repair.

Please be aware that if your product is capable of retaining user-generated data (such as files stored on a computer hard drive, telephone numbers stored on a mobile telephone, songs stored on a portable media player, games saved on a games console or files stored on a USB memory stick) during the process of repair, some or all of your stored data may be lost.

We recommend you save this data elsewhere prior to sending the product for repair.

You should also be aware that rather than repairing goods, we may replace them with refurbished goods of the same type or use refurbished parts in the repair process.

Please be assured though, refurbished parts or replacements are only used where they meet ALDI's stringent quality specifications.

If at any time you feel your repair is being handled unsatisfactorily, you may escalate your complaint. Please telephone us on 1300 777 137 or write to us at:

UNCLE BILL'S AUSTRALIA PTY LTD
48B Egerton Street, Silverwater NSW 1811 Australia
1300 777 137 Opening Hours - 9:00am - 4:30pm (Mon-Fri), 9:00am - 3:00pm (Sat)
service@unclebills.com.au www.signifyelectronics.com.au

AFTER SALES SUPPORT

18 1300 777 137

service@unclebills.com.au

MODEL: EA2265 PRODUCT CODE: 711503 03/2023



FREQUENTLY ASKED QUESTIONS

Question	Answer
Is the Solar Portable Charger waterproof?	<ul style="list-style-type: none">• The Solar Portable Charger is weather resistant. We've gone to great lengths to ruggedise the Solar Portable Charger; including beefing up the manufacturing process with advanced lamination techniques so it'll fend off low pressure water/rain from any direction. However, the Solar Portable Charger is not built for use in high pressure water/heavy rain, and it cannot be totally submerged underwater. If exposed to heavy rain, make sure to dry completely before using it again.
Does the Solar Portable Charger have a built-in battery?	<ul style="list-style-type: none">• No. To make the Solar Portable Charger as lightweight as possible, battery packs such as power banks are to be purchased as a separate accessory. You can either plug your smartphone or device into the Solar Portable Charger to charge up directly from the sun, or charge an energy storage device like a power bank to collect and store power for later. The Solar Portable Charger works seamlessly with most common brands of power banks.
Can you chain multiple Solar Portable Chargers together to charge your device from the sun in less time?	<ul style="list-style-type: none">• No. The Solar Portable Chargers are independent charging devices. They cannot be combined with each other in a chain. A single Solar Portable Charger can charge a maximum of two devices at a time. The charging speed will primarily depend on the positioning of the Solar Portable Charger and the availability of sunlight.
Why am I having trouble charging my smartphone?	<ul style="list-style-type: none">• Some smartphones require very specific and constant power.• Ensure that the Solar Portable Charger is receiving adequate sunlight.• If adequate sunlight is not available, it is recommended to wait until there is more available sunlight and then try again.• Check that the USB charging cable (not supplied) is compatible with your device and approved for use by the manufacturer of your device.• If your smartphone still does not charge, contact the After Sales Support on 1300 777 137 for advice.

OTHER USEFUL INFORMATION

Cleaning and Maintenance

Your Solar Portable Charger is an energy conversion device. Follow these guidelines below to keep your Solar Portable Charger in the best possible condition.

- When you are not using the Solar Portable Charger, it is recommended to pack the Solar Portable Charger away for safe storage.
- The Solar Portable Charger is likely only to require regular “dusting” to keep it clean. Use a dry microfibre cloth or standard duster, to remove the dust from the Solar Portable Charger. Clean the dust from the Solar Portable Charger regularly.
- If the Solar Portable Charger becomes soiled with anything other than dust, clean the Solar Portable Charger by wiping over the surface with a slightly damp cloth or wet sponge and then pat dry with a soft microfibre cloth.
- Do not use detergents, chemical cleaning agents, or abrasive cleaners, and do not allow moisture, water, or other liquid to enter the Solar Portable Charger.

Storage

- When the Solar Portable Charger is not in use, unplug all USB charging cables from the USB ports on the junction box. Now slip the USB dust covers (attached to junction box) into the vacant USB ports to temporarily seal the USB ports. If required, store all accessories like carabiners, USB charging cables (not supplied) etc. in the storage pouch and close the storage pouch by pressing the hook and loop tape together. Once the storage pouch is closed you may now fold and close the Solar Portable Charger (see page 10). Once Solar Portable Charger is securely closed, store it in a cool, dry, and well ventilated location out of direct sunlight. Ensure that it is not subject to humidity.

NOTE: If the Solar Portable Charger has been exposed to rain or moisture, allow it to dry completely before folding away.

WARNING: Do not store any sharp objects inside the storage pouch as they can pierce the storage pouch and cause damage to the Solar Portable Charger. This will void the warranty.

OTHER USEFUL INFORMATION (CONT.)




Responsible Disposal

At the end of its working life, do not throw this device out with your household rubbish. Electrical and electronic products contain substances that can have a detrimental effect on the environment and human health if disposed of inappropriately. Observe any local regulations regarding the disposal of electrical consumer goods and dispose of it appropriately for recycling. Contact your local authorities for advice on recycling facilities in your area.

Please keep the original packaging carton and materials in a safe place. It will help to prevent any damage if the product needs to be transported in the future. In the event it is to be disposed of, please recycle all packaging material where possible.

If you require an alternative format of this instruction manual such as website, DVD or by email, please contact service@unclebills.com.au to obtain a copy.

Specification Table

MODEL:	EA2265
SOLAR CELL:	Monocrystalline
MAX POWER (SOLAR PANEL):	28W
SOLAR CELL LAMINATION:	PET Polymer
TOTAL USB OUTPUT:	5V  4.8A (Max)
USB OUTPUT 1:	5V  2.4A (Max)
USB OUTPUT 2:	5V  2.4A (Max)
DIMENSIONS (FOLDED):	280 x 195 x 35mm
DIMENSIONS (UNFOLDED):	280 x 1040 x 4mm
NET WEIGHT:	1030g (excluding accessories)
OPERATING TEMPERATURE:	-10~60°C
VERSION NO:	1.1
ISSUE DATE:	8th August 2022

THIS DOCUMENT CONTAINS INFORMATION THAT IS SUBJECT TO CHANGE WITHOUT NOTICE.

NOTES

NOTES



ALDI guarantees that our exclusive brand products are developed to our stringent quality specifications. If you are not entirely satisfied with this product, please return it to your nearest ALDI store within 60 days from the date of purchase for a full refund or replacement, or take advantage of our after sales support by calling the supplier's Customer Service Hotline.



Made in China

ALDI STORES, 1 SARGENTS ROAD

MINCHINBURY NSW 2770

www.aldi.com.au

AFTER SALES SUPPORT



1300 777 137



service@unclebills.com.au

MODEL: EA2265

PRODUCT CODE: 711503

03/2023

1

YEAR WARRANTY